



BASIC INFORMATION

42°33' and 42°57' north latitude and 17°58' and 18°35' east longitude

Location: Trebinje is located in the southeastern part of Bosnia and Herzegovina, The Republic of Srpska. At the border of Bosnia and Herzegovina, Montenegro and Croatia.

Area: 904 km²

Population: 31.433

Altitude: 245 m

Climate: Mediterranean - 260 sunny days

Relief: Dinaric karst

Average summer temperature: 26,5 °C,

Average winter temperature: 8 °C

Time zone: CET (GMT + 1 hour)

Currency: BAM

Exchange rate (linked to €): 1 € = 1,95583 BAM

VAT: 17%

Income tax: 10%

TRANSPORT CONNECTION

Highways: M20, M6

International airport: **B&H:** Mostar 114 km, Sarajevo 198 km, Mostar 305 km. **Croatia:** Čilipi 41 km, **Montenegro:** Tivat 93 km

Seaports: **Croatia:** Dubrovnik 31 km, Ploče 130 km,

Montenegro: Bar 120 km, Podgorica 117 km

WHY INVEST IN TREBINJE?

- Strategic position and access to the market of European Union (EU) of 600 million people
- Favourable climatic and hidrological conditions for growing Mediterranean culture
- The potential for tourism development
- The potential for producing hydro and solar energy
- Vicinity to the Adriatic sea – 30 km
- Qualified workforce
- The market in progress
- Low operating costs
- Stimulating tax policy
- Liberal foreign trade regime with most countries

ECONOMIC TRENDS

Foreign trade at the end of 2014:

- The total volume of trade : 235 million BAM
- The cover of imports by exports: 123,5%
- The cover of imports by exports:at the level of the RS 54,5%, at the level of B&H 53,6%
- The most important export products: elektricity, tools for engineering industry ,confectionery products ,essential oils, fish.

FAVOURABLE BUSINESS ENVIRONMENT

- 800 registered legal entities and entrepreneurs
- 1-3 days necessary for company registration
- 15 days necessary for urban planning permit issuing
- Up to 30 days necessary for construction permit issuing
- 5 days necessary for company closure
- City is in the process of certification of the local community with favourable business environment (BFC SEE)
- Formed Economic Council to cooperate with the business community in city development plans

KEY SECTORS

AGRICULTURE

- 9 companies
- Climate Mediterranean, as well as a variant of mild coastal-continental
- Very long and hot summers , mild, short and rainy winters
- Average annual 260 sunny days
- Over 2000 medicinal plants, with about 300 species interesting for pharmacology.

TOURISM

- 38 business entities
- 55% increase in the number of tourists in the last two years
- Vicinity of the Adriatic sea, known as the receptive region
- Healthy food and traditional Herzegovinian cuisine
- Various cultural-historical heritage (archaeological monuments of the past, ethnology)
- Competitive prices

ENERGY

- 8 companies with over 1200 employees
- HPP Dabar in the initial stage of construction. It is planned „HPP Dabar“ to be built as a first Hydropower plant of Upper Horizons

INCENTIVES

Opportunity of loan funds use in the amount of:

- from 30.000 BAM (for family farms) up to 1.000.000.BAM (for entrepreneurs and companies)
- Interest rate 1,5%
- Repayment period from 7 to 10 years,
- Grace period duration from 24 to 36 months and opportunity a credit line regain access.

HUMAN RESOURCES

Total workforce: 12.729

Available workforce: 4,748

Average net salary: 835 BAM

BUSINESS ZONE „VOLUJAC“

Area: 85ha

Ownership: 44,5ha state ownership

Type: brownfield

Zone use: industrial (construction of factories, plants as major polluters is prohibited)

Number of enterprises in the area: 4

Method of sale: auction

Electricity supply: Yes

Voltage : 35kV

Gas availability: No

Water: Industrial water available

Distance from:

Highway Trebinje – Dubrovnik 1km

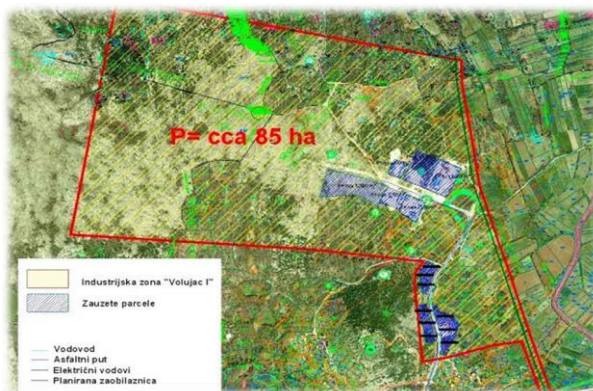
Highway Trebinje – Herceg Novi 2km

Center of the City about 7km

Railway 70km

Seaport 30km

Airport 45km



ZNAČAJNE KOMPANIJE

Swisslion takovo



City of Trebinje
Vuka Karadžića 2
Trebinje

Tel: +387-59-273-460

Fax: +387-59-260-742

Email: grad@trebinje.rs.ba

Web: www.trebinje.rs.ba

INVEST IN TREBINJE

